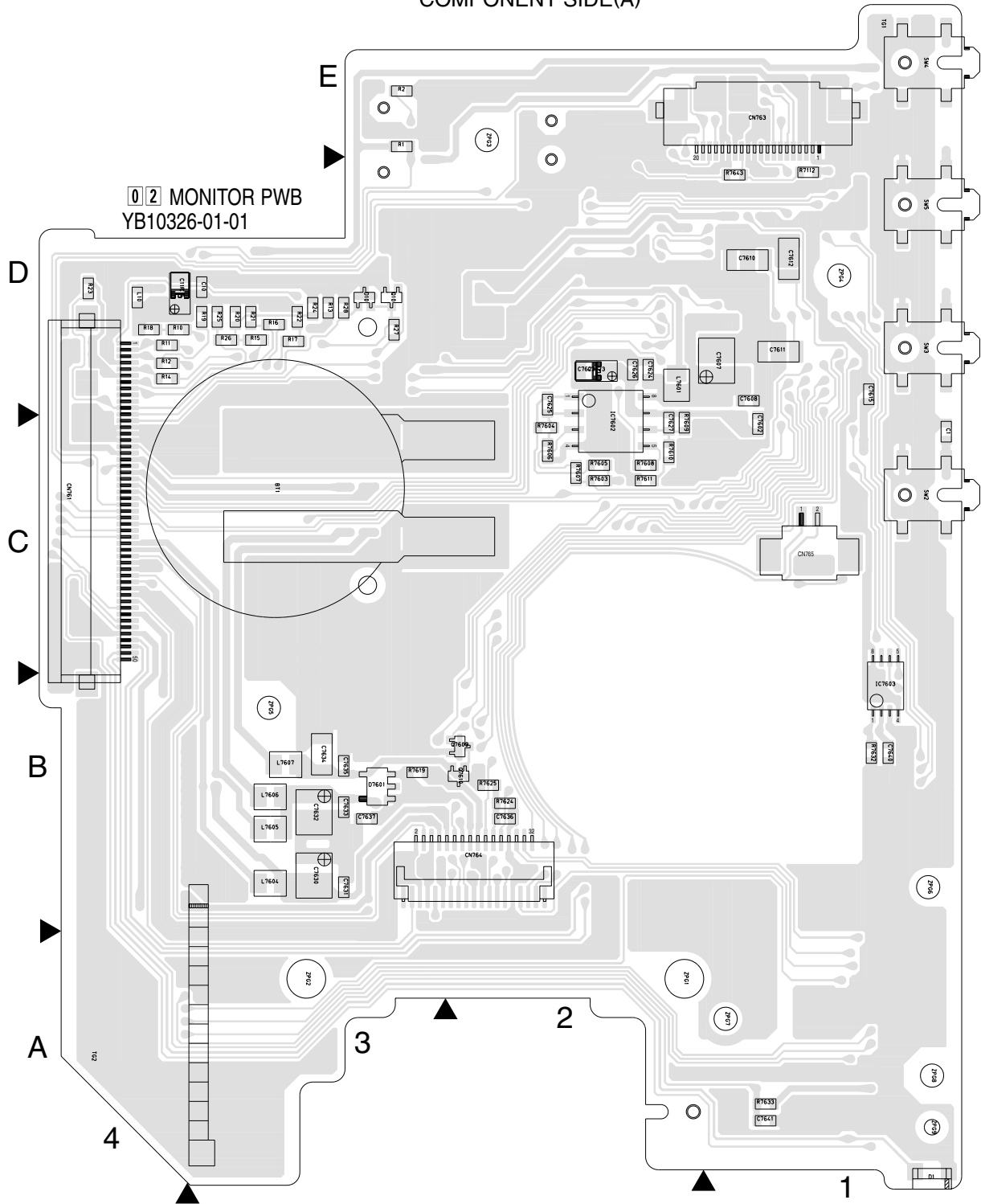


COMPONENT SIDE(A)



COMPONENT PARTS LOCATION GUIDE <MONITOR/YB10326-01-01>

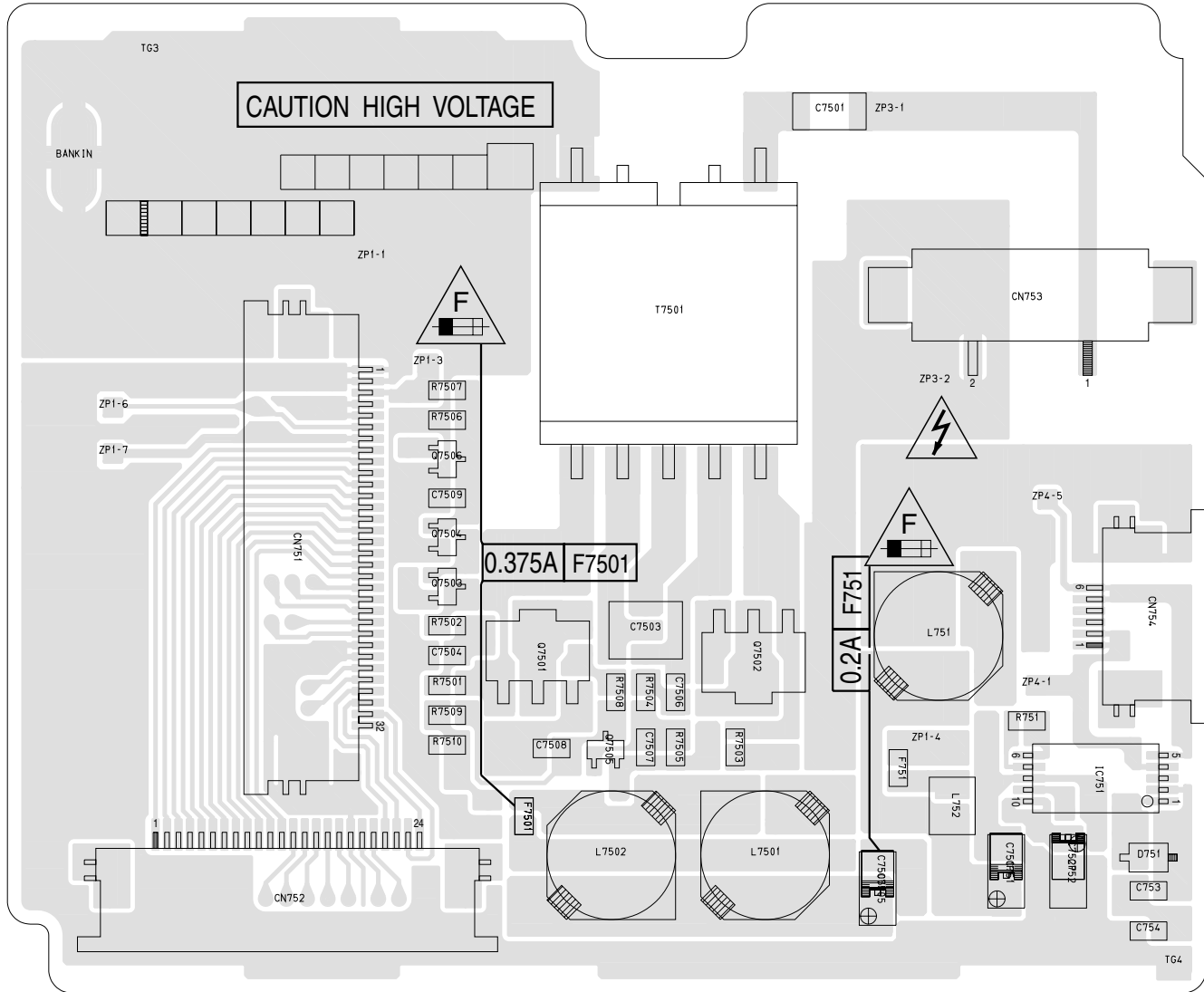
(2/2)

REF.NO.	LOCATION	REF.NO.	LOCATION	REF.NO.	LOCATION	REF.NO.	LOCATION	REF.NO.	LOCATION	REF.NO.	LOCATION	REF.NO.	LOCATION	REF.NO.	LOCATION	
R7606	A C 2C	R7622	B C 3B	R7641	B C 1E	SW3	A C 1D	ZP3-3	B C 2E	ZP1-17	B C 1C	ZP1-32	B C 3B	ZP7602	B C 2B	
R7607	A C 2C	R7623	B C 3B	R7642	B C 1E	SW4	A C 1E	ZP4-9	B C 2B	ZP1-18	B C 3D	ZP1-33	B C 3B	ZPG1	B C 2A	
R7608	A C 2C	R7624	A C 2B	R7643	A C 1D	SW5	A C 1D	ZP6-1	B C 3D	ZP1-19	B C 3D	ZP1-38	B C 4A	ZPG2	A D 3A	
R7609	A C 2C	R7625	A C 2B	R7644	B C 1E	SW6	B C 2E	ZP6-2	B C 3C	ZP1-20	B C 3C	ZP1-46	B C 3B	ZPG3	A D 2E	
R7610	A C 2C	R7626	B C 1D	R7645	B C 1D	SW7601	B C 2A	ZP6-3	B C 3C	ZP1-21	B C 1A	ZP1-49	B C 1A	ZPG4	A D 1D	
R7611	A C 2C	R7627	B C 1D	R7646	B C 1D	TM1	A C 4A	ZP6-4	B C 3C	ZP1-22	B C 2D	ZP3-17	B C 1E	ZPG5	A D 3B	
R7612	B C 3B	R7628	B C 1D	OTHER				TM3	A C 4E	B C 3C	ZP1-23	B C 2D	ZP3-18	B C 2D	ZPG6	A D 1B
R7613	B C 3B	R7629	B C 1E	BT1	A A 3C	TM3	A C 4E	ZP6-5	B C 3C	ZP1-24	B C 2D	ZP3-19	B C 1E	ZPG7	A D 1A	
R7614	B C 3B	R7630	B C 1D	C11P	A A 3D	ZP1-2	B C 4D	ZP6-6	B C 3C	ZP1-25	B C 2C	ZP3-20	B C 2C	ZPG8	A D 1A	
R7615	B C 3B	R7631	B C 3B	C7103P	A A 2D	ZP1-3	B C 4D	ZP6-7	B C 3C	ZP1-26	B C 2D	ZP4-18	B C 2D	ZPG9	A D 1A	
R7616	B C 3B	R7632	A C 1B	C7623P	A A 2D	ZP1-4	B C 3C	ZP6-8	B C 3C	ZP1-27	B C 4A	ZP4-23	B C 2B			
R7617	B C 3B	R7633	A C 1A	C7629P	A A 3B	ZP1-5	B C 4D	ZP6-9	B C 4C	ZP1-28	B C 4A	ZP4-24	B C 2B			
R7618	B C 3B	R7634	B C 2C	C7639P	B C 3C	ZP1-6	B C 4C	ZP1-11	B C 2C	ZP1-29	B C 2C	ZP4-25	B C 1C			
R7619	A C 3B	R7635	B C 2C	SW1	B C 3E	ZP1-7	B C 4C	ZP1-12	B C 2D	ZP1-30	B C 4A	ZP6-10	B C 3D			
R7621	B C 3B	R7640	B C 1D	SW2	A A 1C	ZP1-8	B C 4C	ZP1-14	B C 4A	ZP1-31	B C 4A	ZP7601	B C 1D			

4.2 LCD BL CIRCUIT BOARD

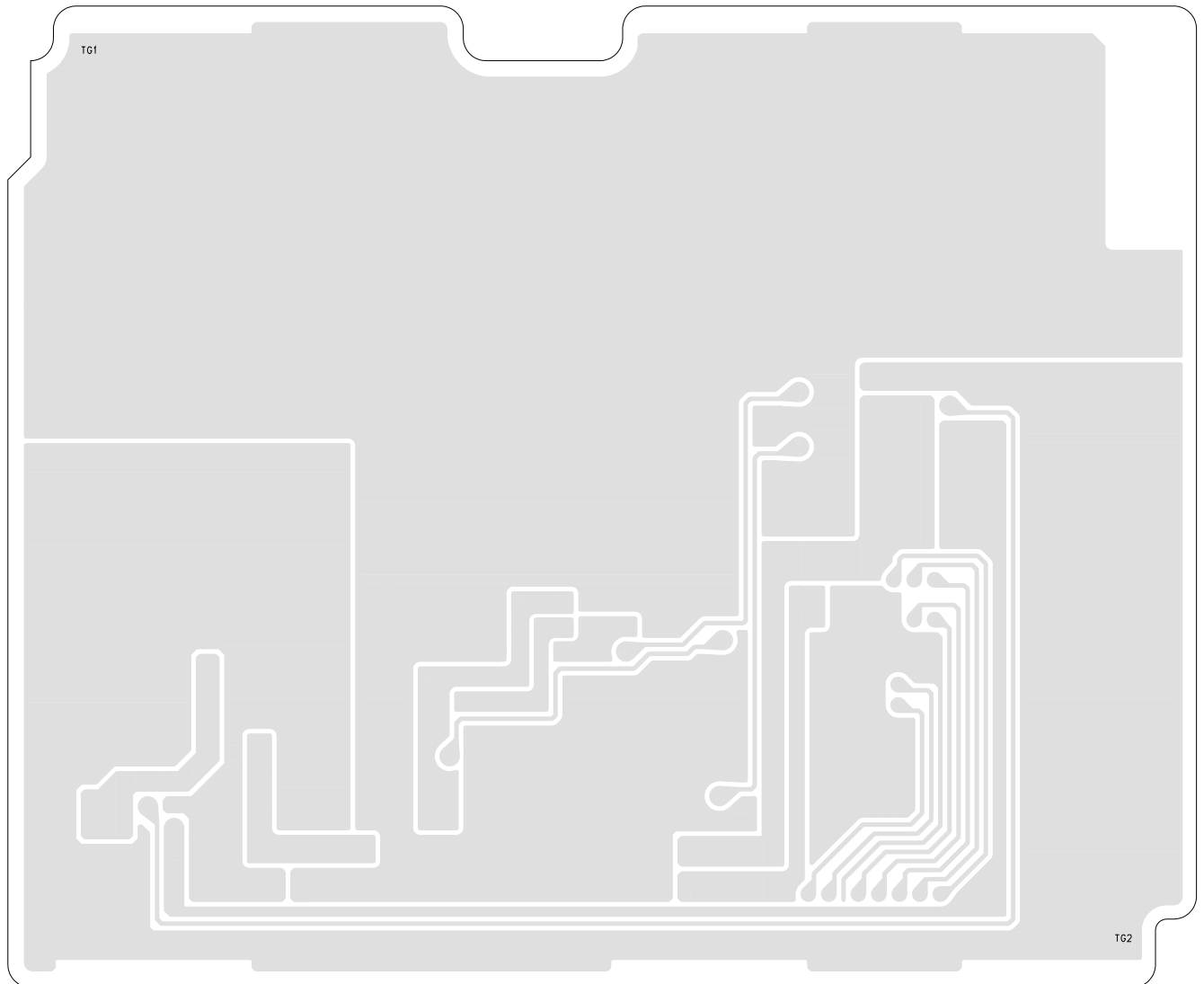
03 LCD BL PWB
YB10325

FOIL SIDE(B)



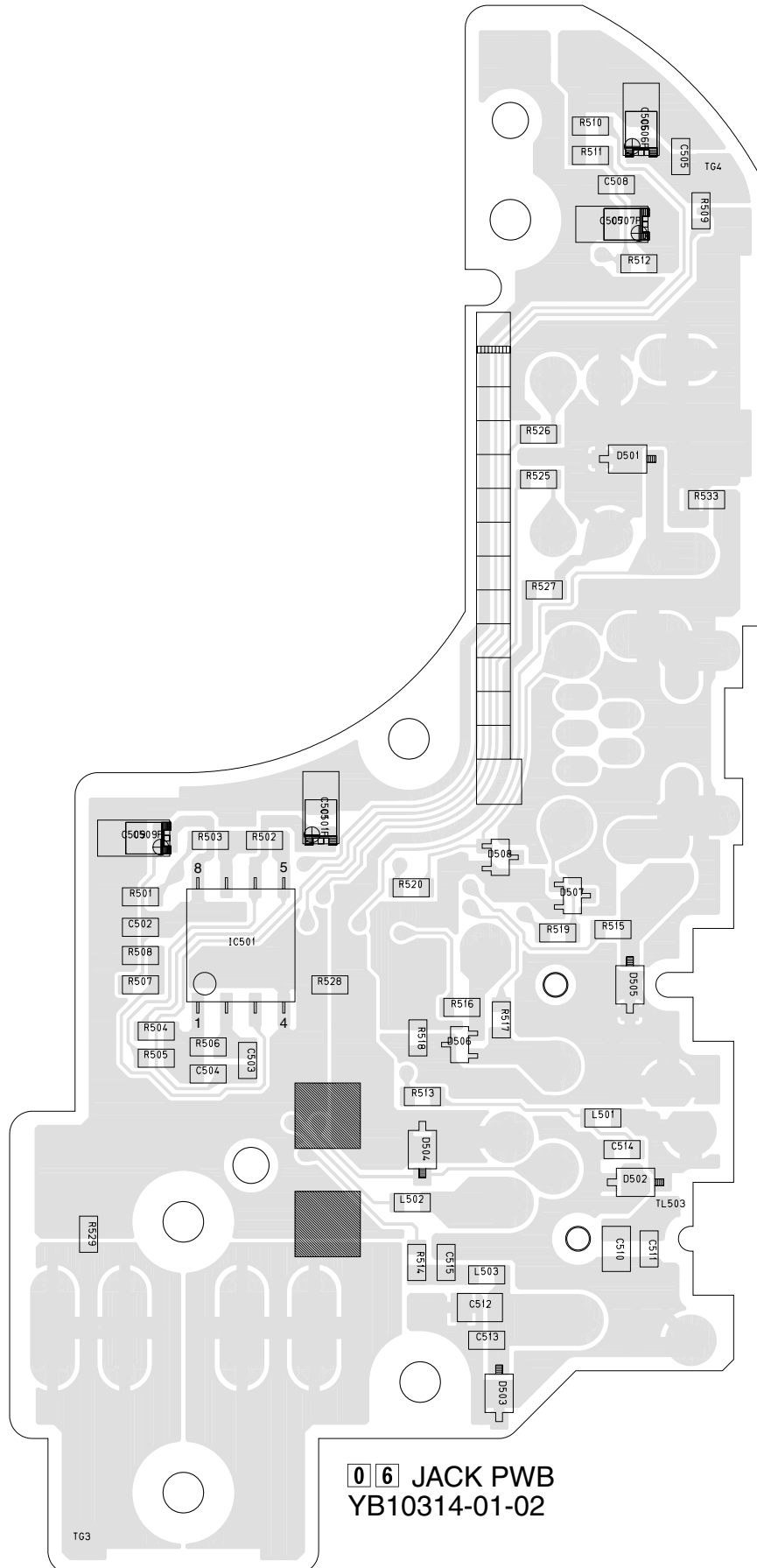
COMPONENT SIDE(A)

03 LCD BL PWB
YB10325

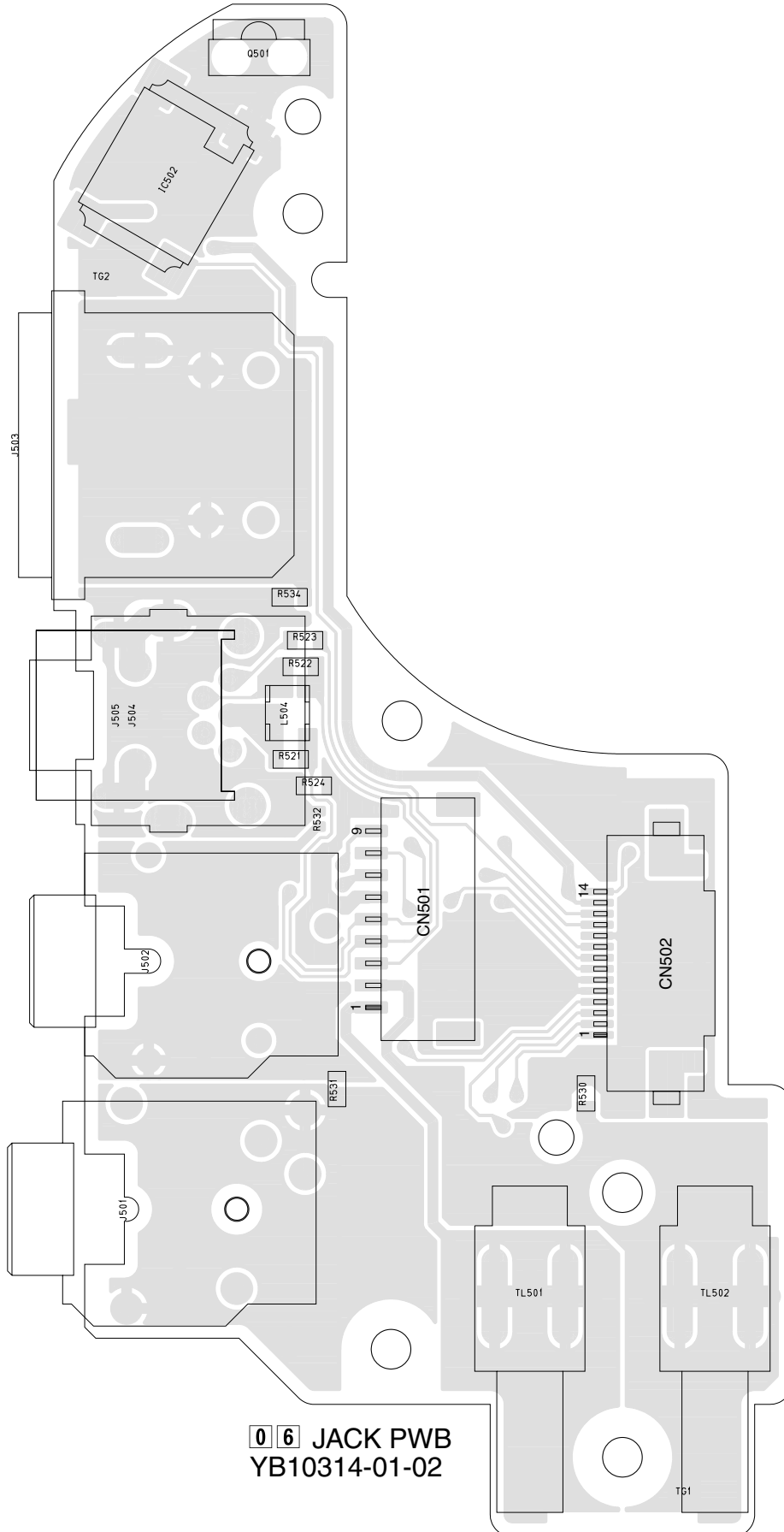


4.3 JACK CIRCUIT BOARD

FOIL SIDE(B)



COMPONENT SIDE(A)



0 6 JACK PWB
YB10314-01-02

4.4 JUNCTION CIRCUIT BOARD

